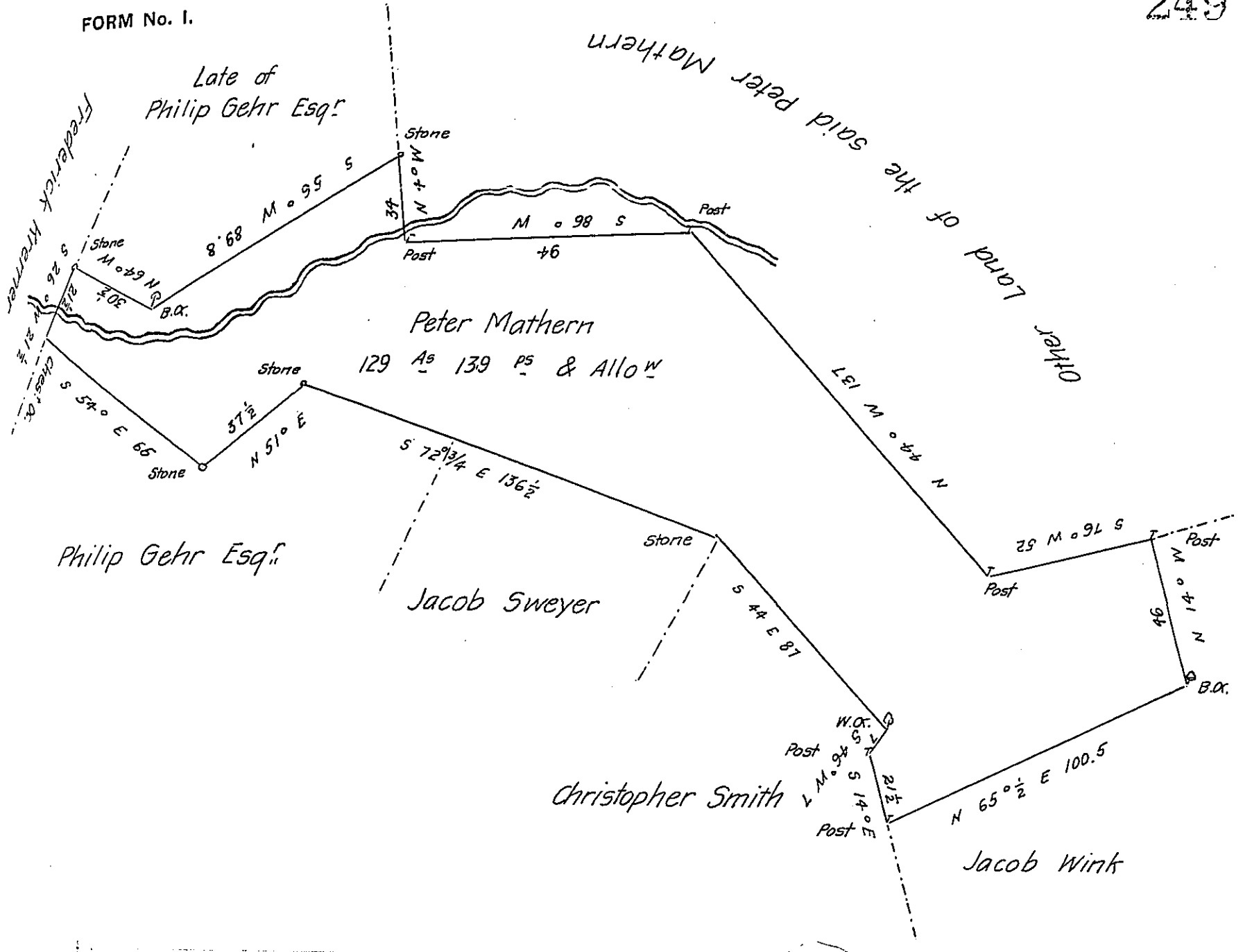


FORM No. 1.



Draught of a Tract of Land Situate in Greenwich Township
 Berks County Survey'd on the 2nd day of February A.D. 1802 unto Peter
 Mathern in pursuance of his Warrant bearing date the 9th day of October
 A.D. 1801 Containing one hundred and twenty nine Acres one hundred and
 thirty nine perches and Allowance of Six Per Ct for Roads &c^a. Including an
 Improvement made Seven years ago

Pr.
 Joseph Hoch D.S.

To Samuel Cochran Esquire
 Surveyor General of Pennsylv^a

IN TESTIMONY that the above is a copy of the original remaining on file in
 the Department of Internal Affairs of Pennsylvania, made
 conformably to an Act of Assembly approved the 16th day of
 February, 1833, I have hereunto set my Hand and caused
 the Seal of said Department to be affixed at Harrisburg,
 this twenty eighth day of November 1905

Samuel Cochran
 Secretary of Internal Affairs.